

Footnotes

See Buffalo Up Close

Nuwejaars River Nature Reserve is offering small groups of up to 12 people the unique opportunity to view buffalo up close. Book your visit at The Black Oystercatcher:

Wine Tasting

Strandveld Vineyards

028 482 1902, www.strandveld.com

The Black Oystercatcher 028 482 1618, www.blackoystercatcher.co.za

The Berrio 028 482 1880, www.theberrio.co.za

Zoetendal 028 482 1717, www.zoetendalwines.co.za

Put on your Hiking Shoes

The **Spookdraai Hiking Trail** at Cape Agulhas takes hikers along the coast and through limestone fynbos with bird-life, views, and historical points. Look-out spots highlight the outstanding features of the southern most towns, vleis, whales, dolphins and where two oceans meet. It is 3km long and takes less than two hours.

The **Two Oceans Hiking Trail** starts at the L'Agulhas Private Nature Reserve and follows the coastline, where extremely rare and endangered species of fynbos may be seen.

The **Shipwreck Hiking Trail** is where hikers can experience the spirit of the southern coastline, with shipwrecks, fynbos and marine life. Contact Louis Willemse on 083 540 4575 or Chris van Gass on 028 435 7270.

The circular **Rasperpunt Hiking Trail** starts from the Meisho Maru shipwreck near the Cape Agulhas lighthouse. Experience coastal fynbos and ancient fish traps for the first half of the walk. Turn inland, cross the gravel road, and work your way up the ridge with magnificent views of the Rasperpunt rock formations and the coastline. The trail is 5.5km long and route markers are numbered along the route.

Accommodation

Agulhas Guest Farm Elzaan Coetzee

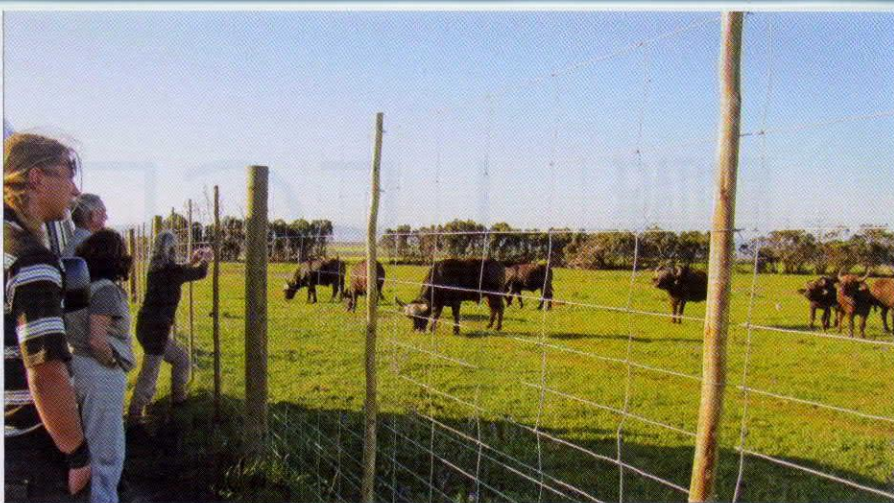
028 424 2343, www.agulhasguestfarm.co.za

Strandveld Farms has self-catering cottages, www.strandveld.co.za

Elim Gastehuis 028 482 1715,

elimor@brd.dorea.co.za

See our **Classifieds** pages 117 – 119 for more



□ The idea is to create a nature reserve and to re-introduce game that were shot out in the area centuries ago, such as buffalo.

□ The quagga breeding programme is yielding results.

□ Founder member of the SMA and a director of the Nuwejaars River Nature Reserve, Con Neethling, says the project is the first of its kind in the country.

□ The Moravian village of Elim is at the heart of the Nuwejaars Wetland Landowners Association.